



Installation instructions for PZ4AL- 00771- 00

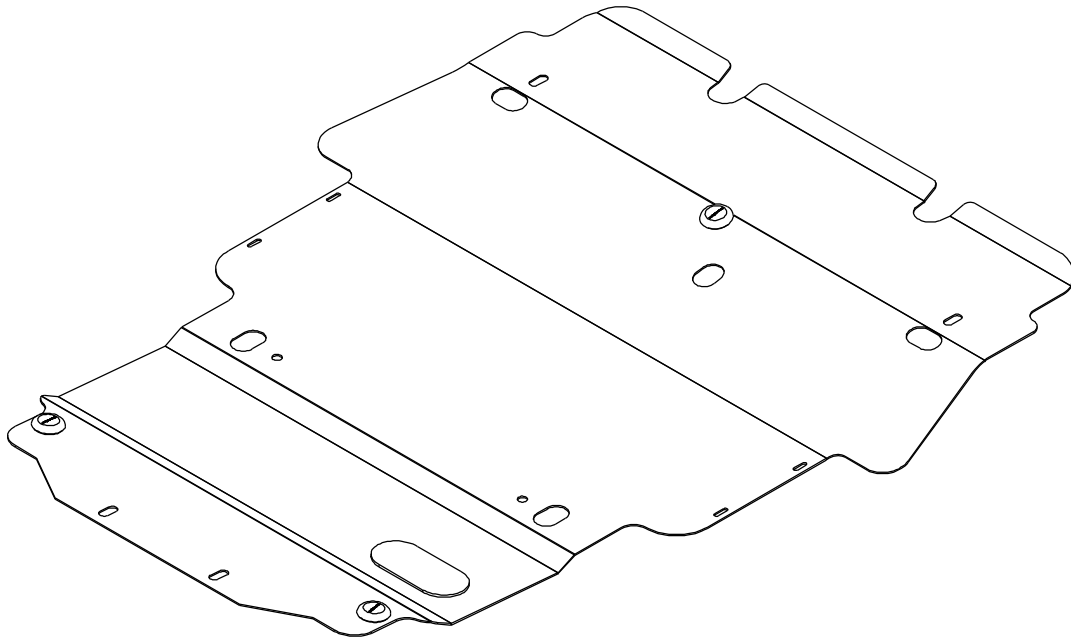
LEXUS GS 300, GS450H

Under Run Protective Shield



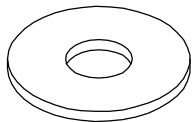
Model Year:	2005
Vehicle Code:	GRS190L-*-W, WS191L-*-W; GWS191*-BEXQHW
Part Number:	PZ4AL- 00771- 00
 Weight	13.3 kg
 Installation Time:	30 min
Manual reference number	AIM 002 049-0

A



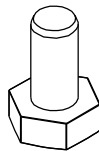
PZ4AL - 00771 - 00

B



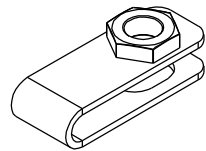
4 x Ø10

C

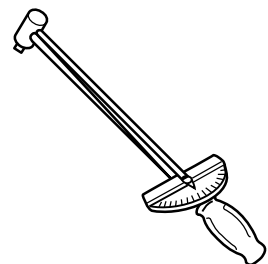
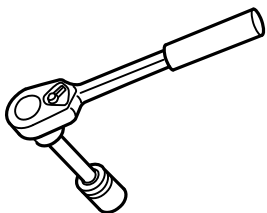


4x M10X30

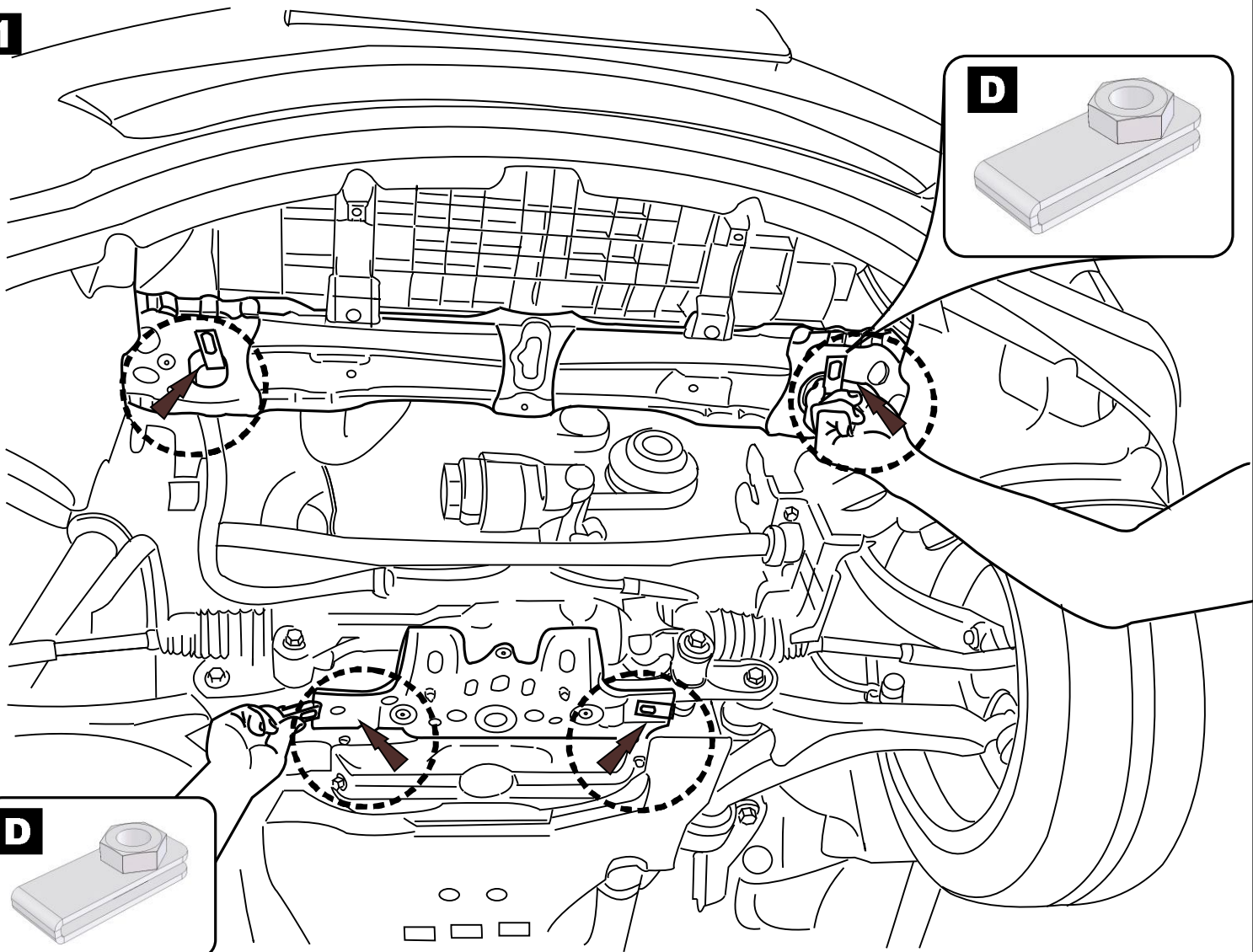
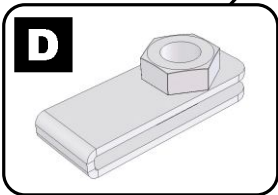
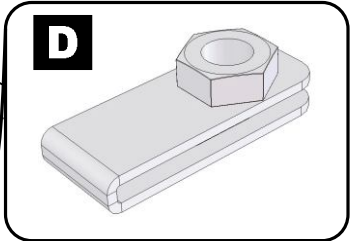
D



4 x



1



2

